



WESTBOURNE TERRACE

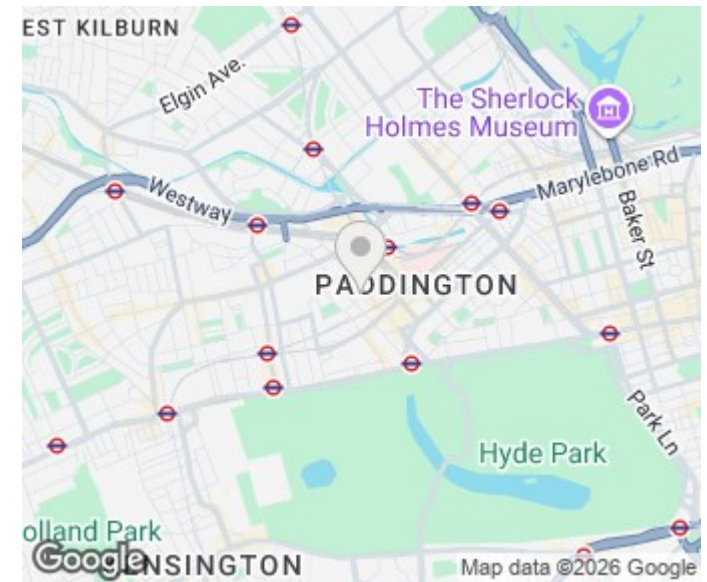
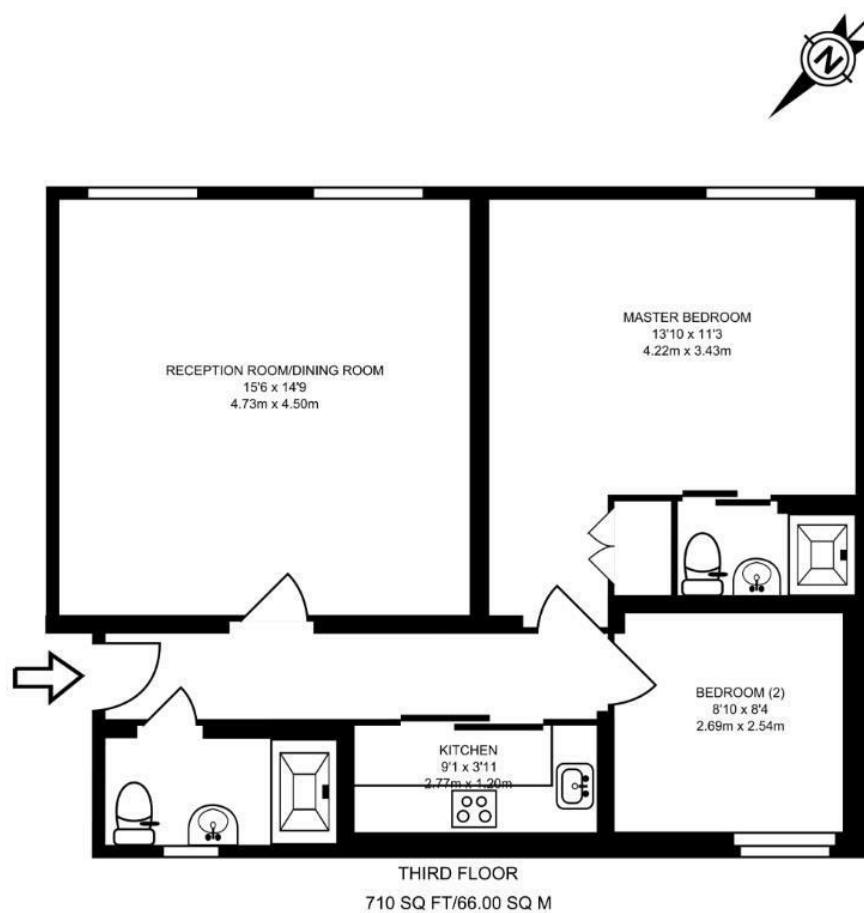
LONDON, W2

£725 PER WEEK

PMP International are delighted to present this spacious 2 bedroom, 2 bathroom apartment of this well kept period building.

Westbourne Terrace is within close proximity to Hyde Park, Oxford Street and the West End offering some of the best shops, restaurants and theatres. Local transport links include Paddington mainline (Network Rail and Heathrow Express) and underground station and Lancaster Gate Underground.

PMP | INTERNATIONAL



Energy Efficiency Rating		
	Current	Potential
Very energy efficient - lower running costs		
(92 plus) A		
(81-91) B		
(69-80) C		
(55-68) D	63	
(39-54) E		
(21-38) F		
(1-20) G		
Not energy efficient - higher running costs		
England & Wales	EU Directive 2002/91/EC	

Agents Note: Whilst every care has been taken to prepare these particulars, they are for guidance purposes only. All measurements are approximate and are for general guidance purposes only and whilst every care has been taken to ensure their accuracy, they should not be relied upon and potential buyers/tenants are advised to recheck the measurements

London
PMP International
94 Belsize Lane
Belsize Park
London
NW3 5BE

020 7701 2878
info@pmpi.co.uk
www.pmpi.co.uk

PMP | INTERNATIONAL